



Catalogue of gear hydroelectric generator

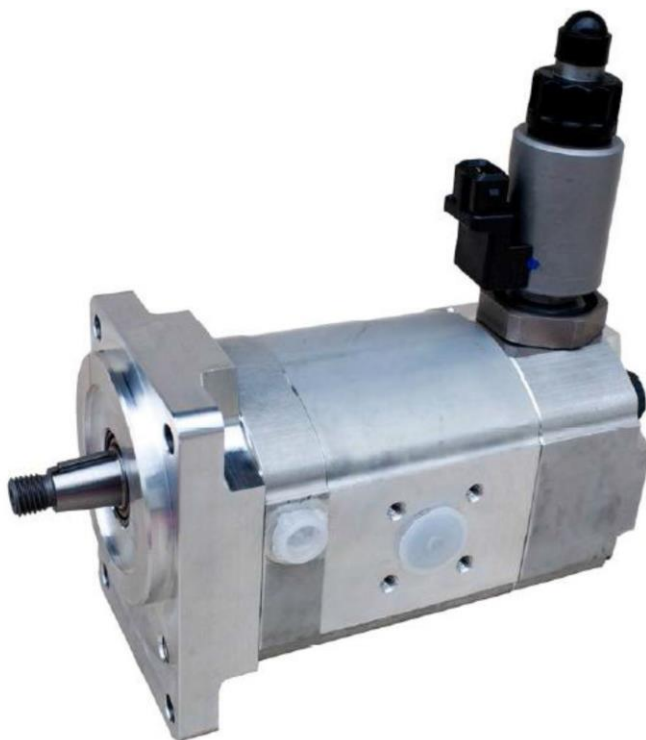
Hydroengines and hydroelectric generators for buses **KAROSA**

Hydroengine HPM019RBDK2D.4(210)
Replacement for hydroengine BOSCH-REXROTH

Karosa number: 0511625026 (0511625018)
Order number: 0511625026

Hydroengine HPM019RBDK2D.4(180)
Replacement for hydroengine BOSCH-REXROTH

Karosa number: 0511625027 (0511625021)
Order number: 0511625027



MARTING s.r.o. (Ltd.), NÁBREŽNÁ 2, SK - 038 61 VRÚTKY, SLOVAKIA
tel.: ++421 43 4281 707-9, fax: ++421 43 4281 706, www.marting.sk
E-mail: marting@marting.sk



Catalogue of gear hydroelectric generator

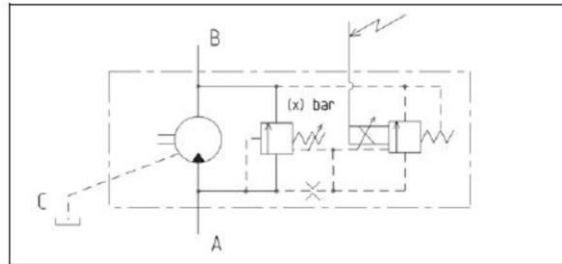
Catalogue of gear hydroelectric generator

HPM019RBDK2D.4(210)

Replacement for BOSCH-REXROTH 0511625607
Karosa no.: 0511625026 (0511625018)

HPM019RBDK2D.4(180)

Replacement for BOSCH-REXROTH 0511625027
Karosa no.: 0511625027 (0511625021)



Technical conditions:

<u>Pressure on hydroelectric engine input:</u>	- nominal	20MPa
	- maximum HPM019RBDK2D.4(210)	x = 21 MPa (limited by secure valve)
Max. control voltage and current	- maximum HPM019RBDK2D.4(180)	x = 18 MPa (limited by secure valve)
	- HPM019RBDK2D.4(210)	12VDC/1,5A proportional regulation
	- HPM019RBDK2D.4(180)	24VDC/0,75A ON/OFF regulation

Hydroengine design:	Clockwise
Surroundings temperature:	-30 to +60°C
Liquid temperature:	-30 to +80°C

Liquid - mineral oil for hydrostatic drives f.e.:	MOGUL OLN 22 TO 46
	Shell Tellus 32
	Shell Tellus 46
	Madit OHHM 46

Operating range of hydraulic oil kinematic viscosity during 40°C:	20 - 60 mm ² s ⁻¹
Maximum kinematic viscosity (during start up):	1200 . mm ² s ⁻¹
Filtration efficiency of filter insert:	10 - 25 μm
Filtration efficiency of filter insert (for operating pressure p>18 MPa):	10 μm
Filtration coefficient β _x :	β ₂₅ 75
Working position:	arbitrary

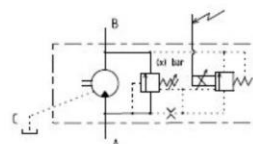
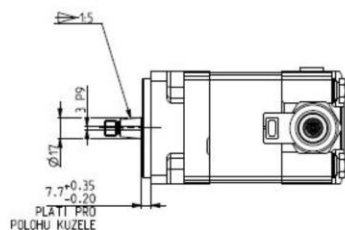
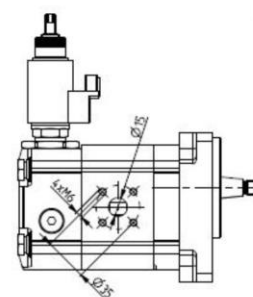
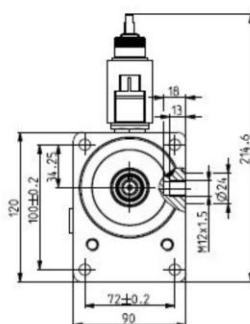
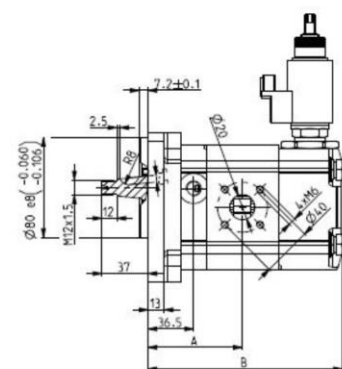
Technical specifications

Signification of gear hydroelectric generator	Nominal geometric capacity** cm ³ / rot.	Rotations 1/min			Nominal pressure MPa	During nominal rotations and nominal pressure	
		Min. *	Max. *	Nominal		input kW	overflow dm ³ /min
HPM019RBDK2D.4(210)	23,4	600	3000	1000	20		50
HPM019RBDK2D.4(180)	23,4	600	3000	1000	20		50

* Permanent operation is allowed only in rotations range from 600 to 3000 min⁻¹.
Out of this rotations range is allowed max. pressure 16 MPa.

** Applies for working liquid with viscosity of 40 +/- 5 mm² s⁻¹ and temperature 40°C.

MARTING s.r.o. (Ltd.), NÁBREŽNÁ 2, SK - 038 61 VRÚTKY, SLOVAKIA
tel.: ++421 43 4281 707-9, fax: ++421 43 4281 706, www.marting.sk
E-mail: marting@marting.sk



MARTING s.r.o. (Ltd.), NÁBREŽNÁ 2, SK - 038 61 VRÚTKY, SLOVAKIA
 tel.: ++421 43 4281 707-9, fax: ++421 43 4281 706, www.marting.sk
 E-mail: marting@marting.sk